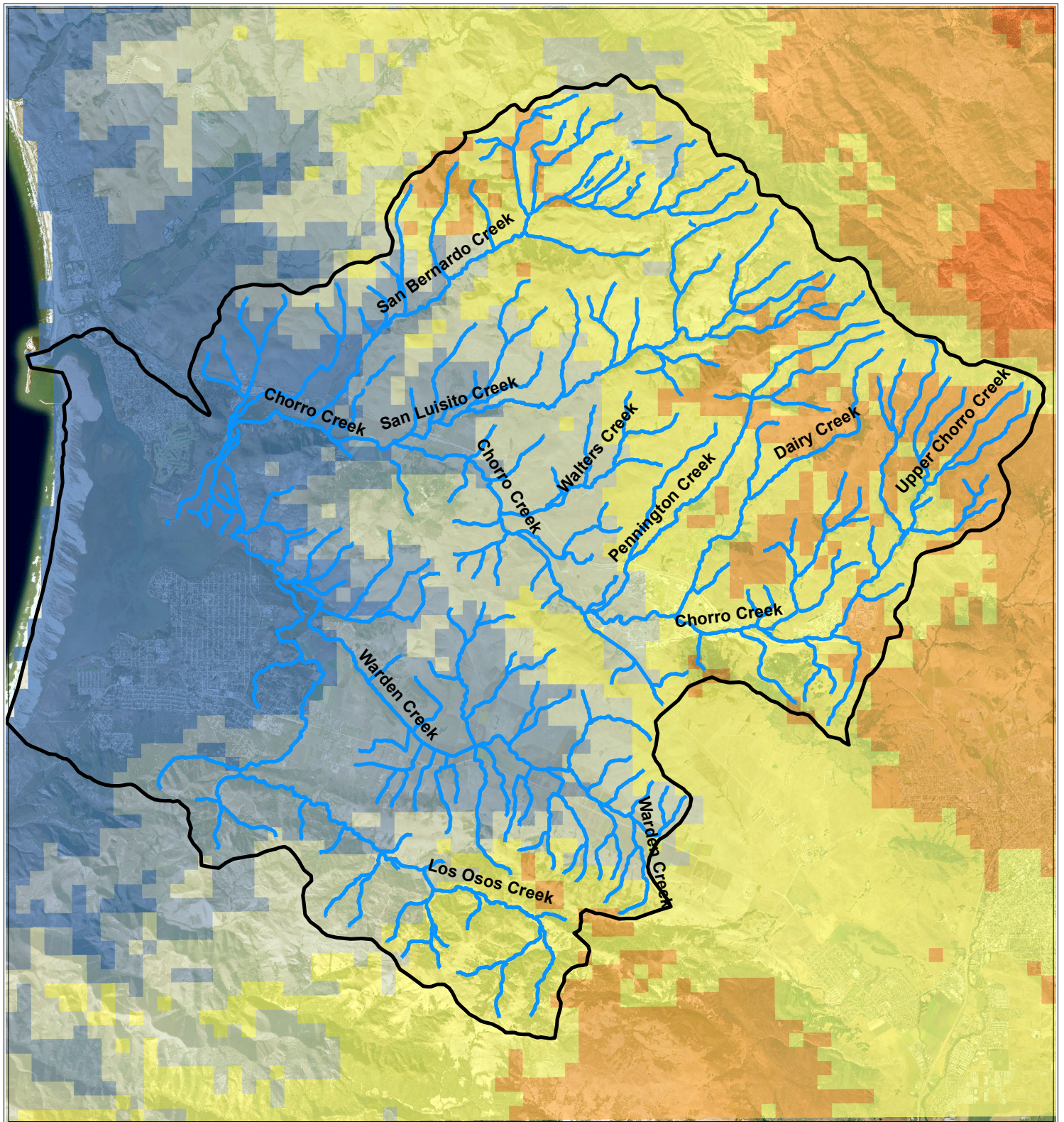


# Historic Average Maximum Temperature (1981-2010)



0 0.5 1 2 3 4 Miles



## Legend

- Streams
- Watershed boundary

## Historic Average Maximum Temp. (1981-2010)

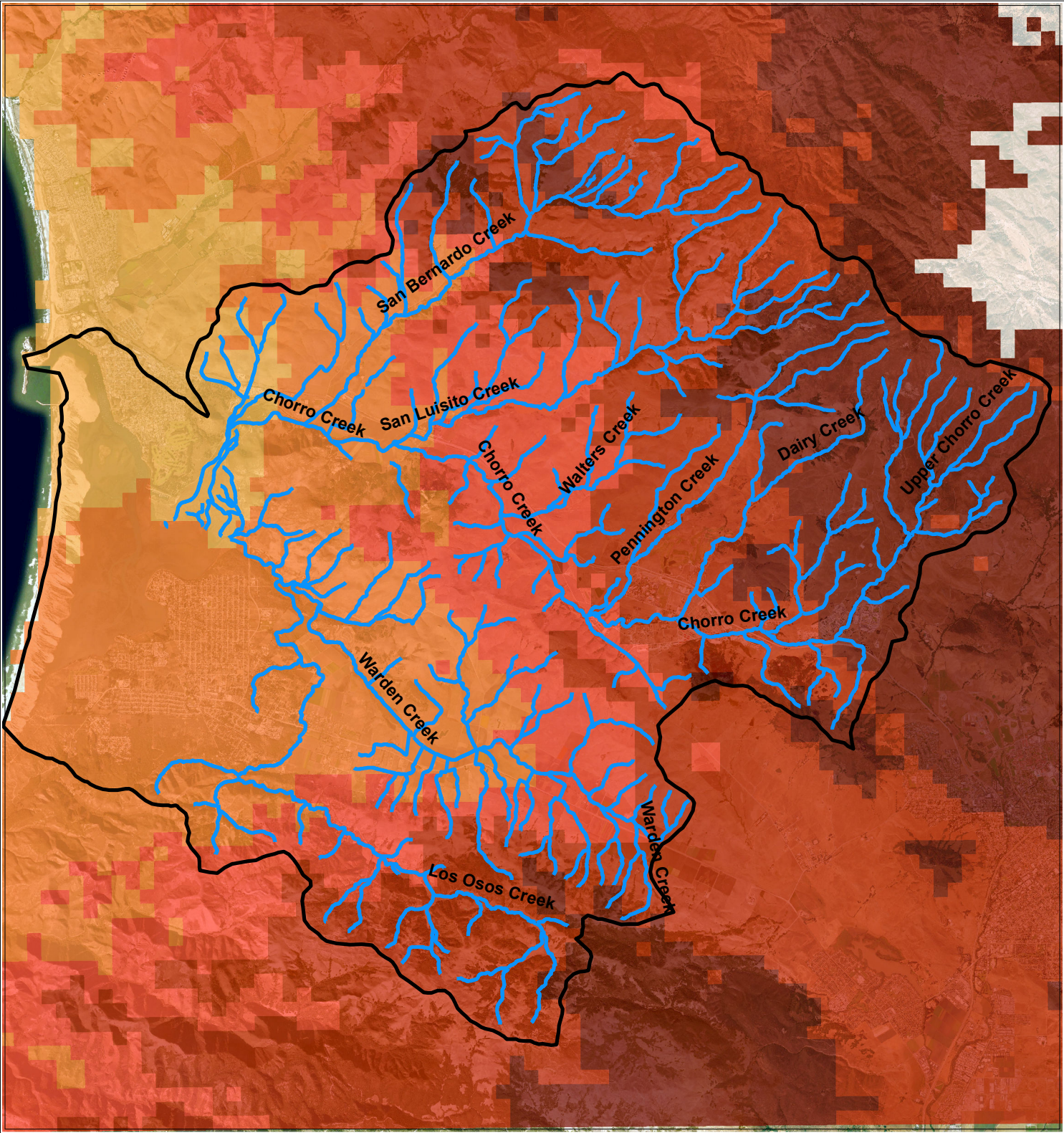
### Celsius

- 19
- 20
- 21
- 22
- 23
- 24

Historic temperature data was downloaded from the BCM.  
Map shows the average maximum temperature for Morro Bay from 1981-2010.



# Projected Average Maximum Temperature MIROC A2 (2070-2099)



**Legend**

Streams

Watershed boundary

**MIROC A2 Avg. Max. Temp. (2070-2099)**

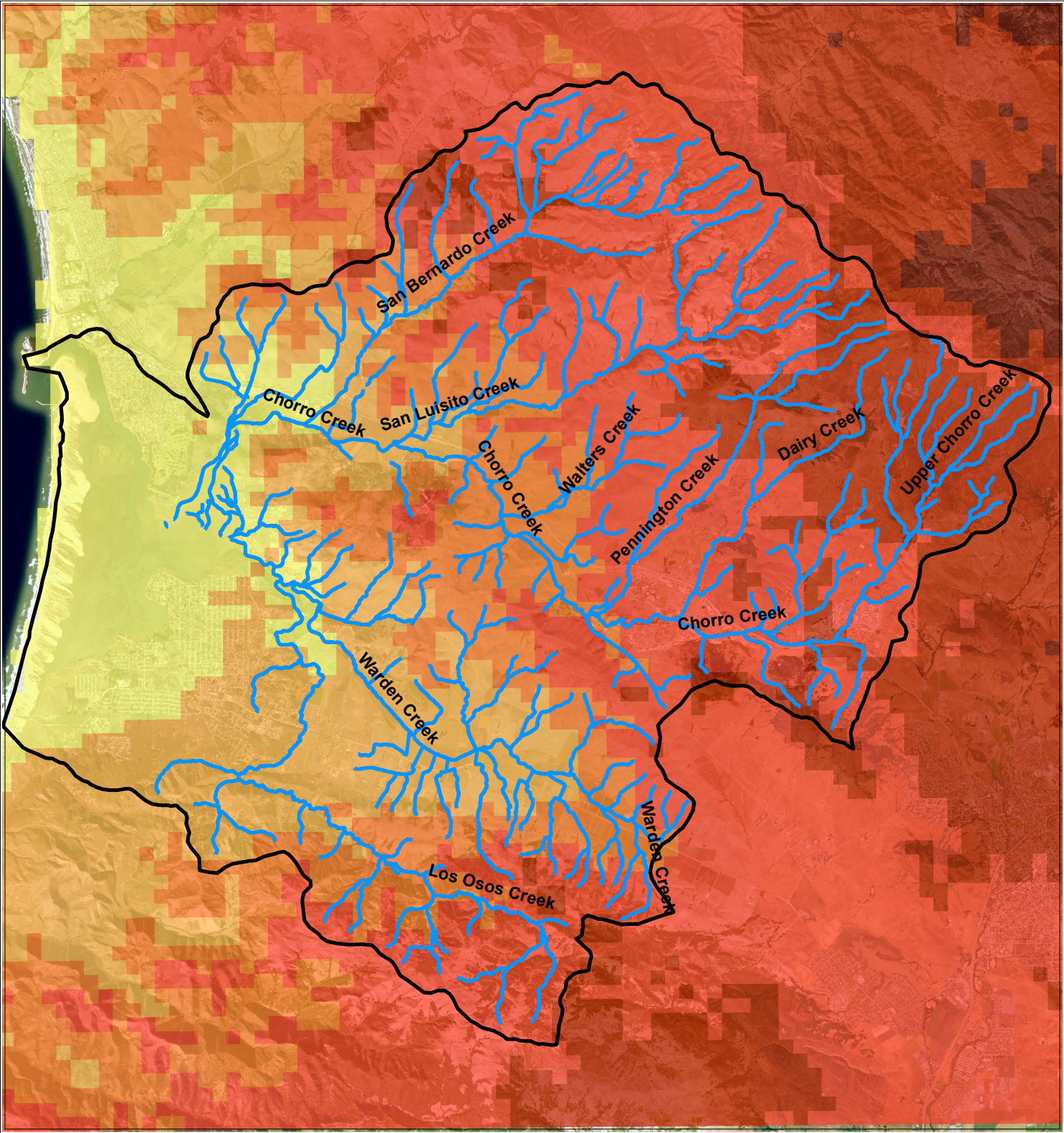
**Celsius**

	23
	24
	25
	26
	27
	28

MIROC 3.2 temperature projections were downloaded from the BCM and used the A2 scenario for carbon emissions produced by the IPCC. Map shows the projected average maximum temperatures for Morro Bay for 2070-2099.



Projected Average Maximum Temperature MIROC RCP 4.5 (2070-2099)



**Legend**

- Streams
- Watershed boundary

MIROC 3.2 RCP 4.5 Avg. Max. Temp. (2070-2099)

Celsius

22
23
24
25
26
27

00.51234

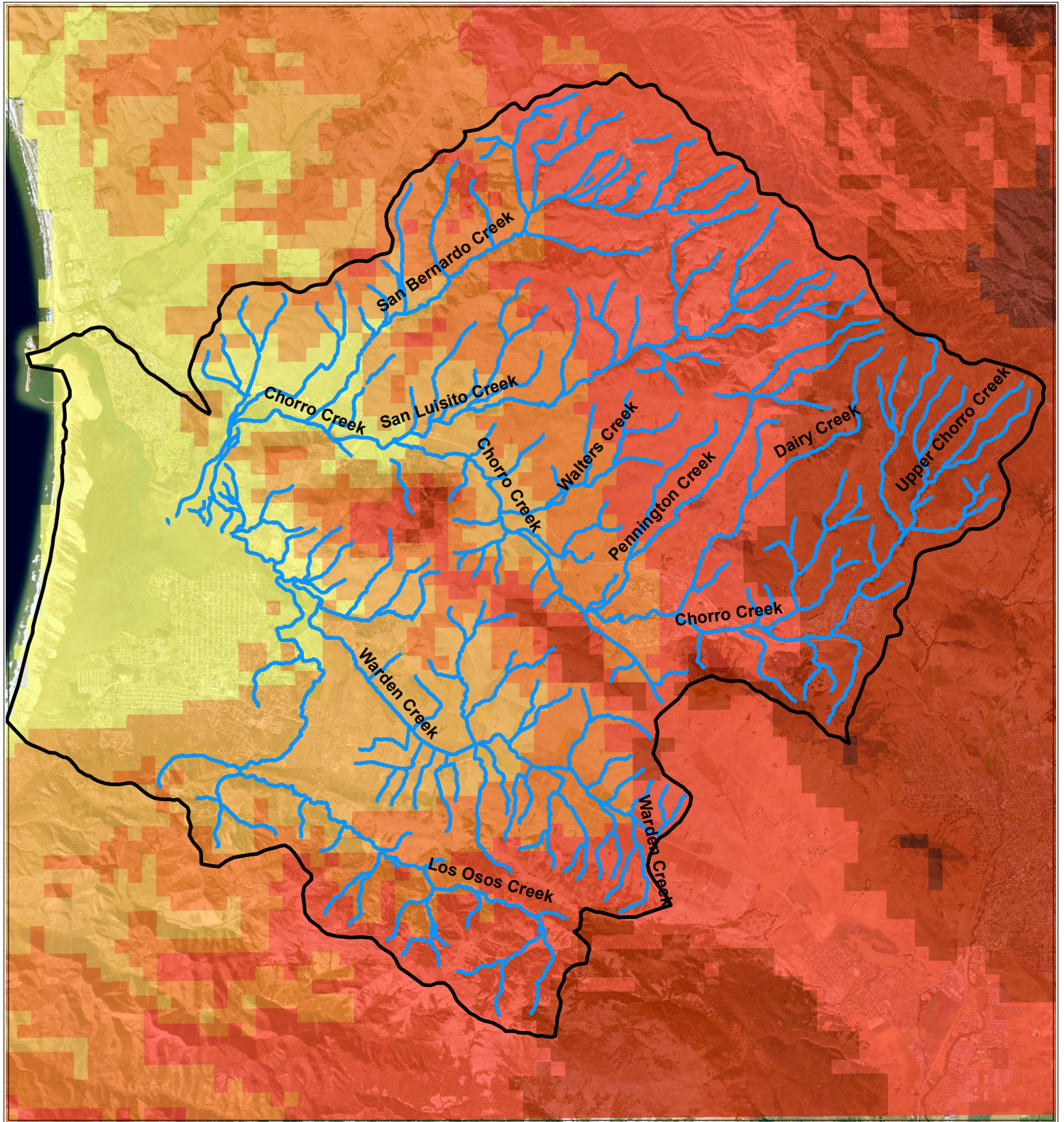
Miles

N

MIROC 3.2 temperature projections were downloaded from the BCM and used the RCP 4.5 scenario for carbon emissions produced by the IPCC. Map shows the projected average maximum temperatures for Morro Bay for 2070-2099.



# Projected Average Maximum Temperature PCM A2 (2070-2099)



0 0.5 1 2 3 4 Miles



## Legend

- Streams
- Watershed boundary

## PCM A2 Avg. Max. Temp. (2070-2099)

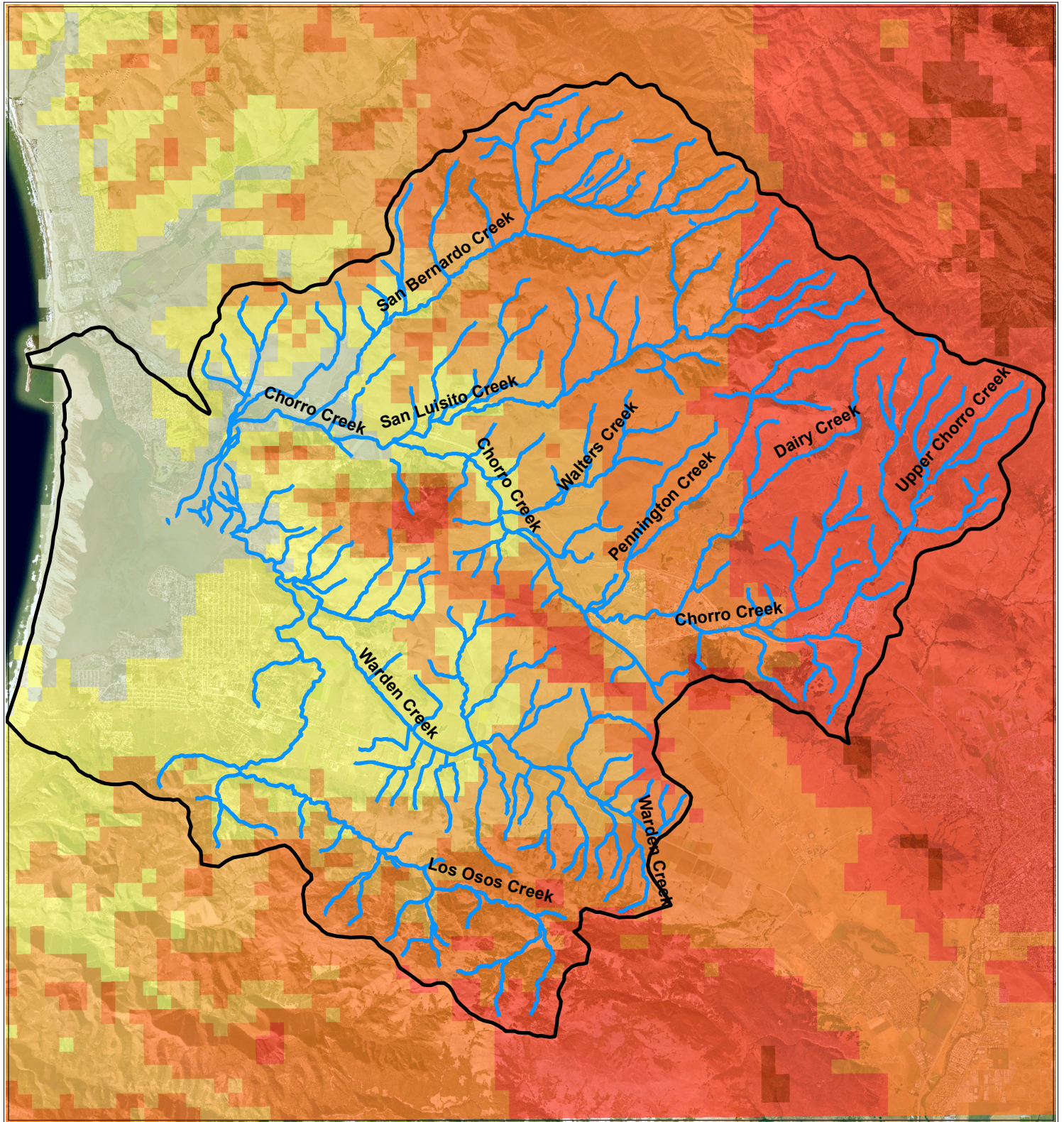
### Celsius

- 22
- 23
- 24
- 25
- 26
- 27

PCM temperature projections were downloaded from the BCM and used the A2 scenario for carbon emissions produced by the IPCC. Map shows the projected average maximum temperatures for Morro Bay for 2070-2099.



# Projected Average Maximum Temperature PCM B1 (2070-2099)



0 0.5 1 2 3 4 Miles



## Legend

- Streams
- Watershed boundary

## PCM B1 Avg. Max. Temp. (2070-2099)

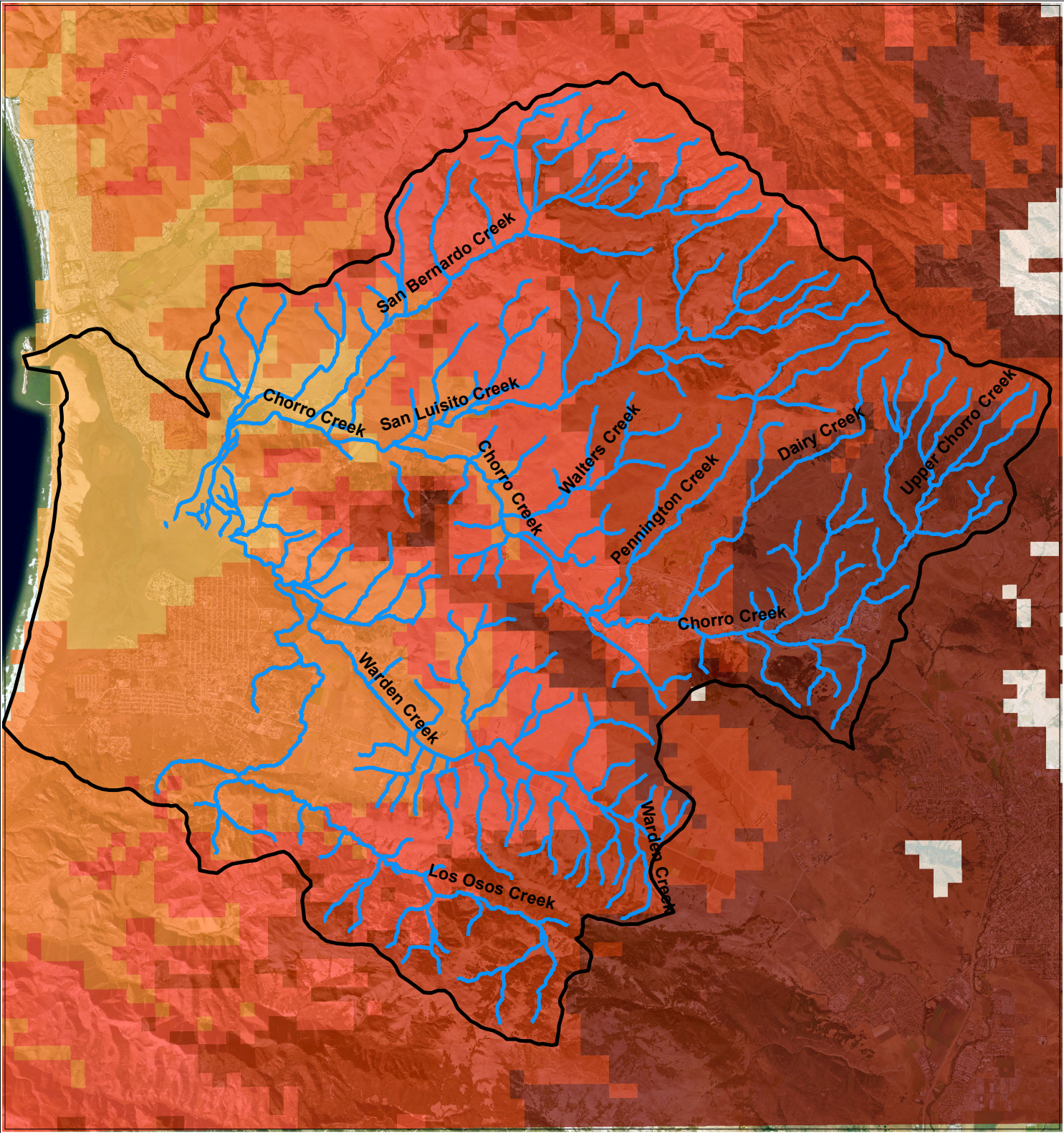
### Celsius

- 21
- 22
- 23
- 24
- 25
- 26

PCM temperature projections were downloaded from the BCM and used the B1 scenario for carbon emissions produced by the IPCC. Map shows the projected average maximum temperatures for Morro Bay for 2070-2099.



# Projected Average Maximum Temperature GFDL A2 (2070-2099)



0 0.5 1 2 3 4 Miles



**Legend**

- Streams
- Watershed boundary

**GFDL A2 Avg. Max. Temp. (2070-2099)**

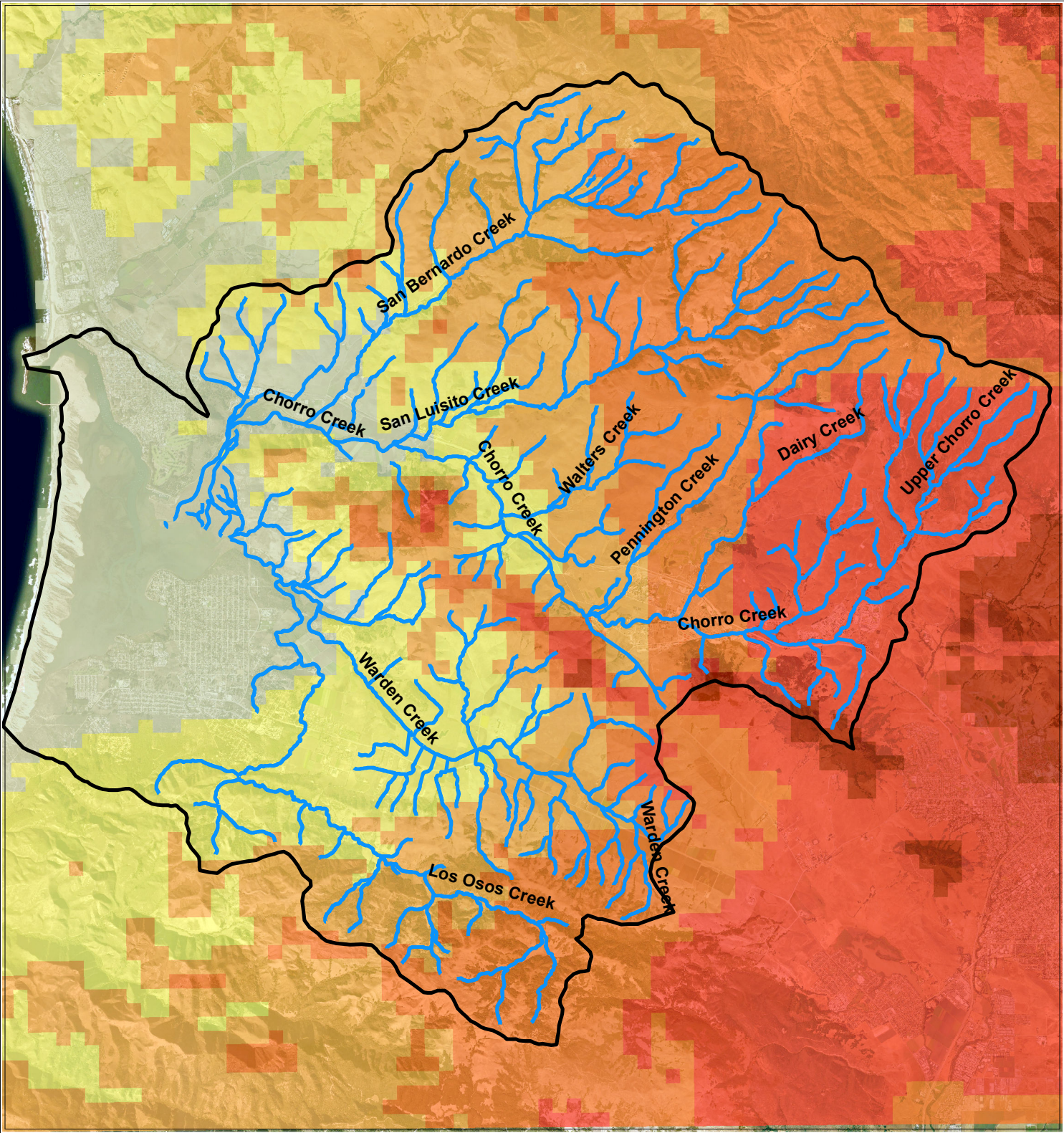
**Celsius**

- 23
- 24
- 25
- 26
- 27
- 28

GFDL temperature projections were downloaded from the BCM and used the A2 scenario for carbon emissions produced by the IPCC. Map shows the projected average maximum temperatures for Morro Bay for 2070-2099.



# Projected Average Maximum Temperature GFDL B1 (2070-2099)



0 0.5 1 2 3 4 Miles



**Legend**

Streams

Watershed boundary

**GFDL B1 Avg. Max. Temp. (2070-2099)**

Celsius

21

22

23

24

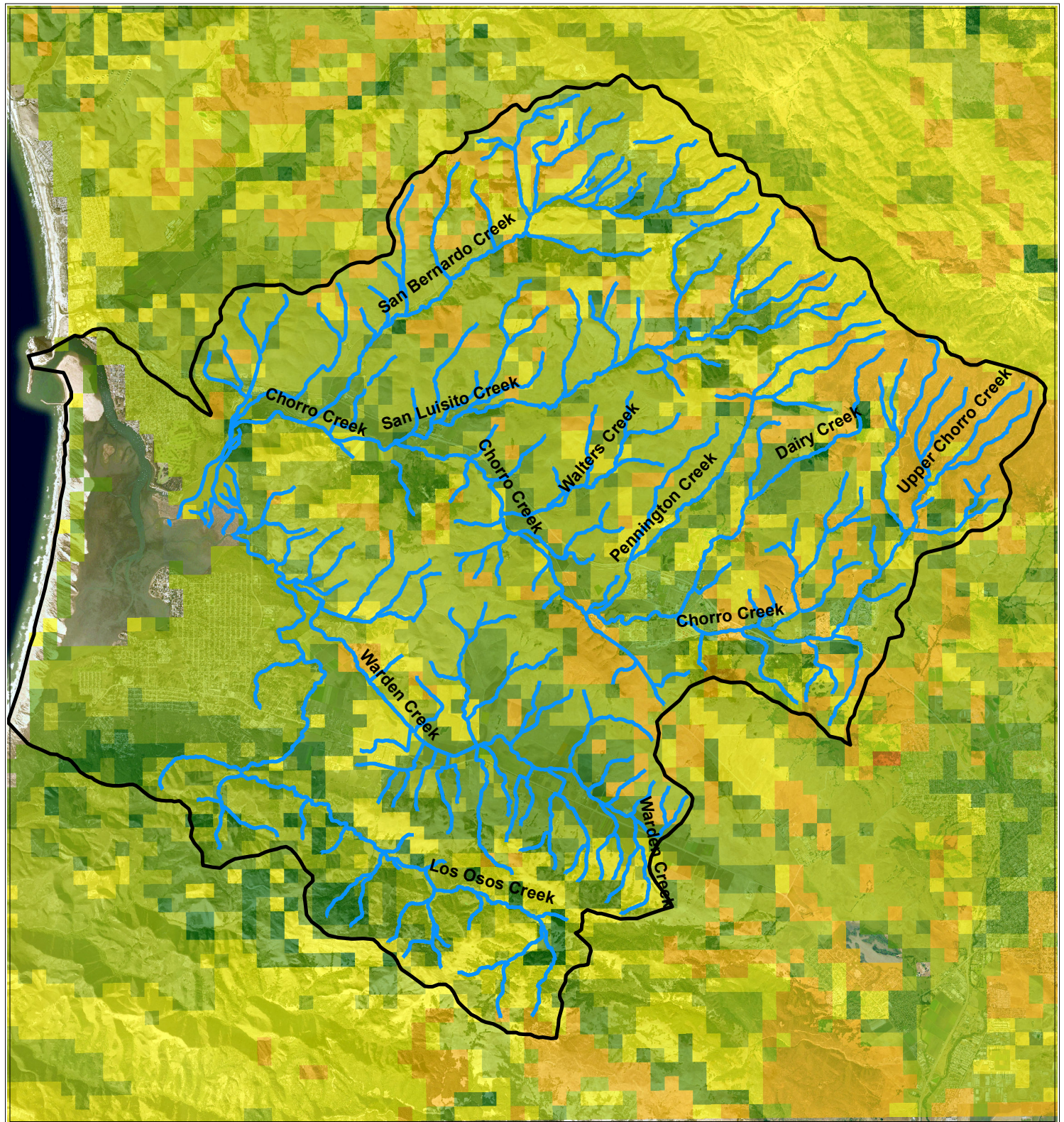
25

26

GFDL temperature projections were downloaded from the BCM and used the B1 scenario for carbon emissions produced by the IPCC. Map shows the projected average maximum temperatures for Morro Bay for 2070-2099.



# Historic Climate Water Deficit (1981-2010)



0 0.5 1 2 3 4 Miles



## Legend

- Streams
- Watershed boundary

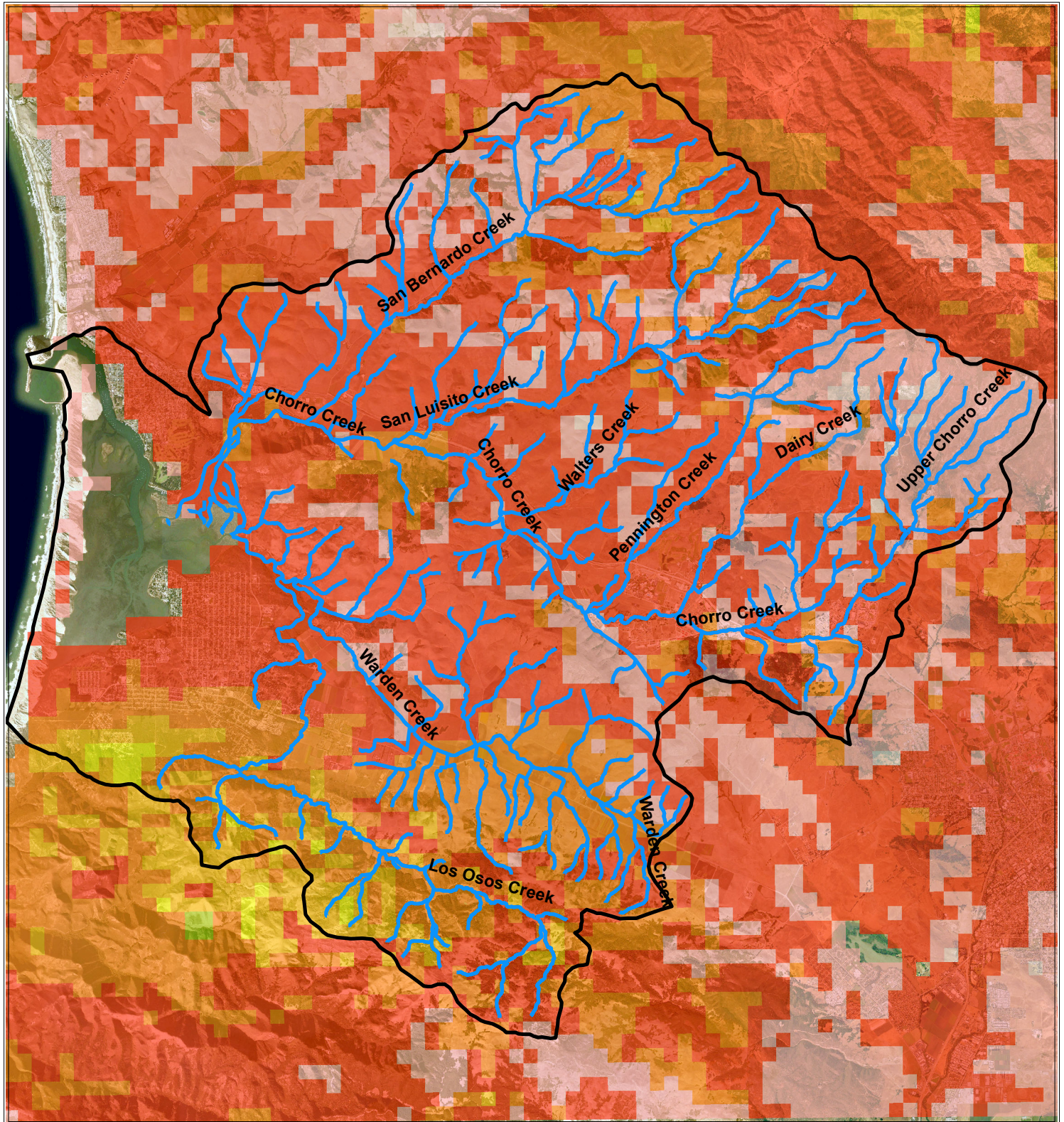
## Historic CWD

- mm
- 800
  - 850
  - 900
  - 950
  - 1000
  - 1050
  - 1100

Historic CWD data was downloaded from the BCM.  
Map shows the average CWD for Morro Bay from 1981-2010.



# Projected Climate Water Deficit for MIROC A2 (2070-2099)



0 0.5 1 2 3 4 Miles



## Legend

Streams

Watershed boundary

MIROC 3.2 A2 CWD (2070-2099)

mm

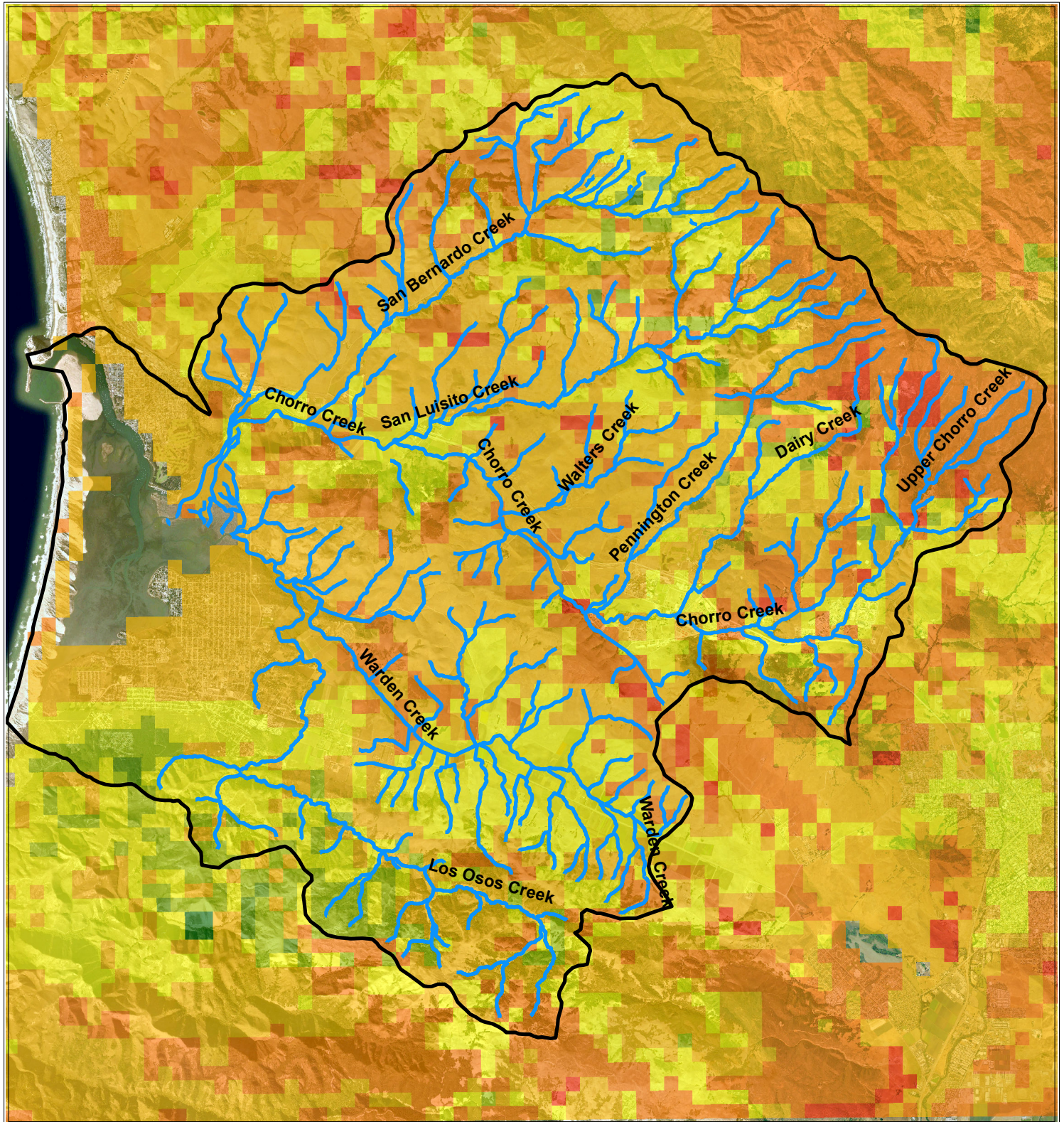
900  
950  
1000  
1050  
1100  
1150  
>1150

MIROC 3.2 CWD projections were downloaded from the BCM and used the A2 scenario for carbon emissions produced by the IPCC. Map shows the projected CWD for Morro Bay for 2070-2099.

Evan Mundahl  
10/05/2015



# Projected Climate Water Deficit for MIROC RCP 4.5 (2070-2099)



0 0.5 1 2 3 4 Miles



## Legend

- Streams
- Watershed boundary

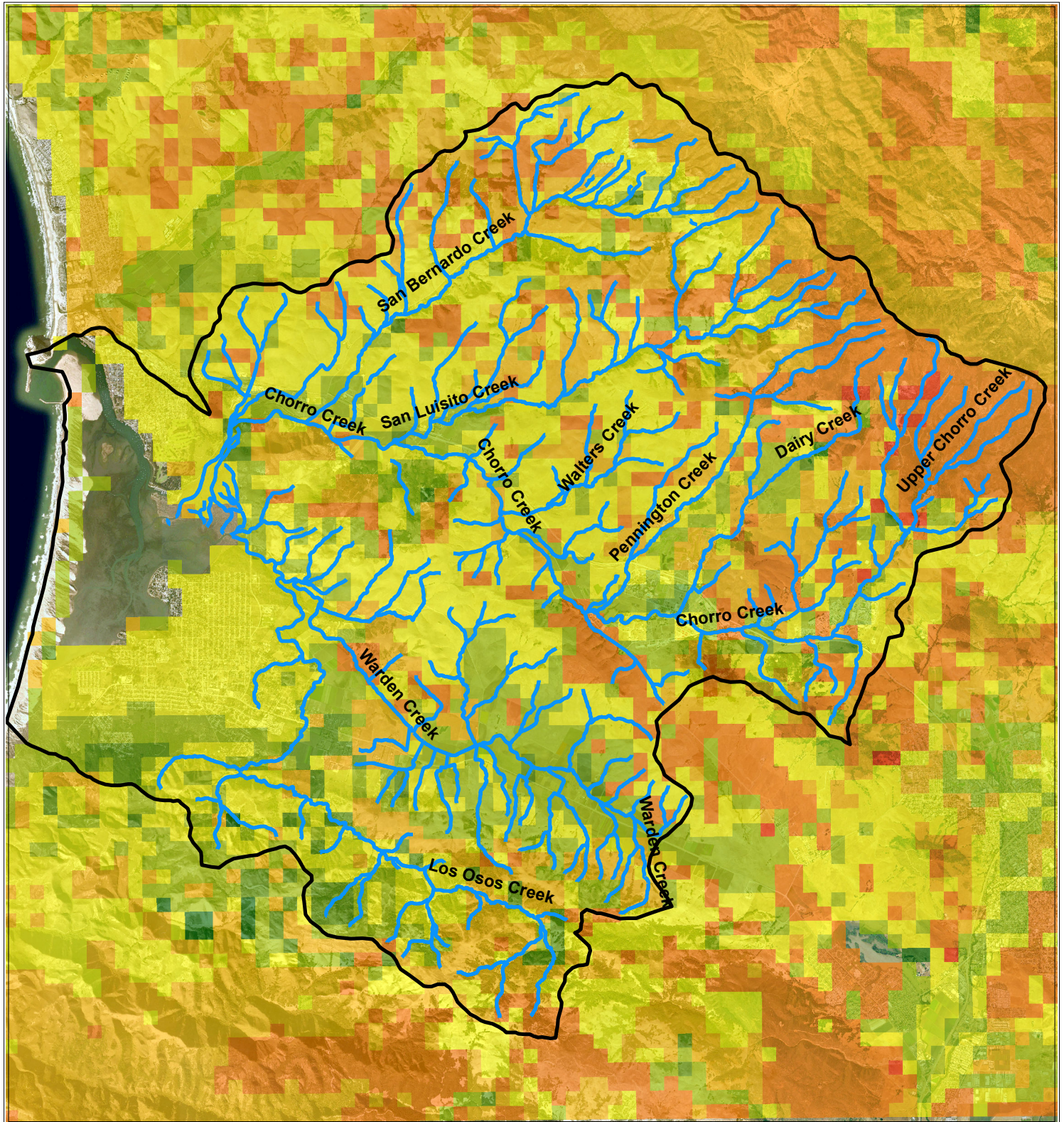
### MIROC 3.2 RCP 4.5 CWD (2070-2099)

- mm
- 800
  - 850
  - 900
  - 950
  - 1000
  - 1050
  - 1100

MIROC 3.2 CWD projections were downloaded from the BCM and used the RCP 4.5 scenario for carbon emissions produced by the IPCC. Map shows the projected CWD for Morro Bay for 2070-2099.



# Projected Climate Water Deficit for PCM A2 (2070-2099)



0 0.5 1 2 3 4 Miles



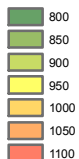
## Legend

Streams

Watershed boundary

PCM A2 CWD (2070-2099)

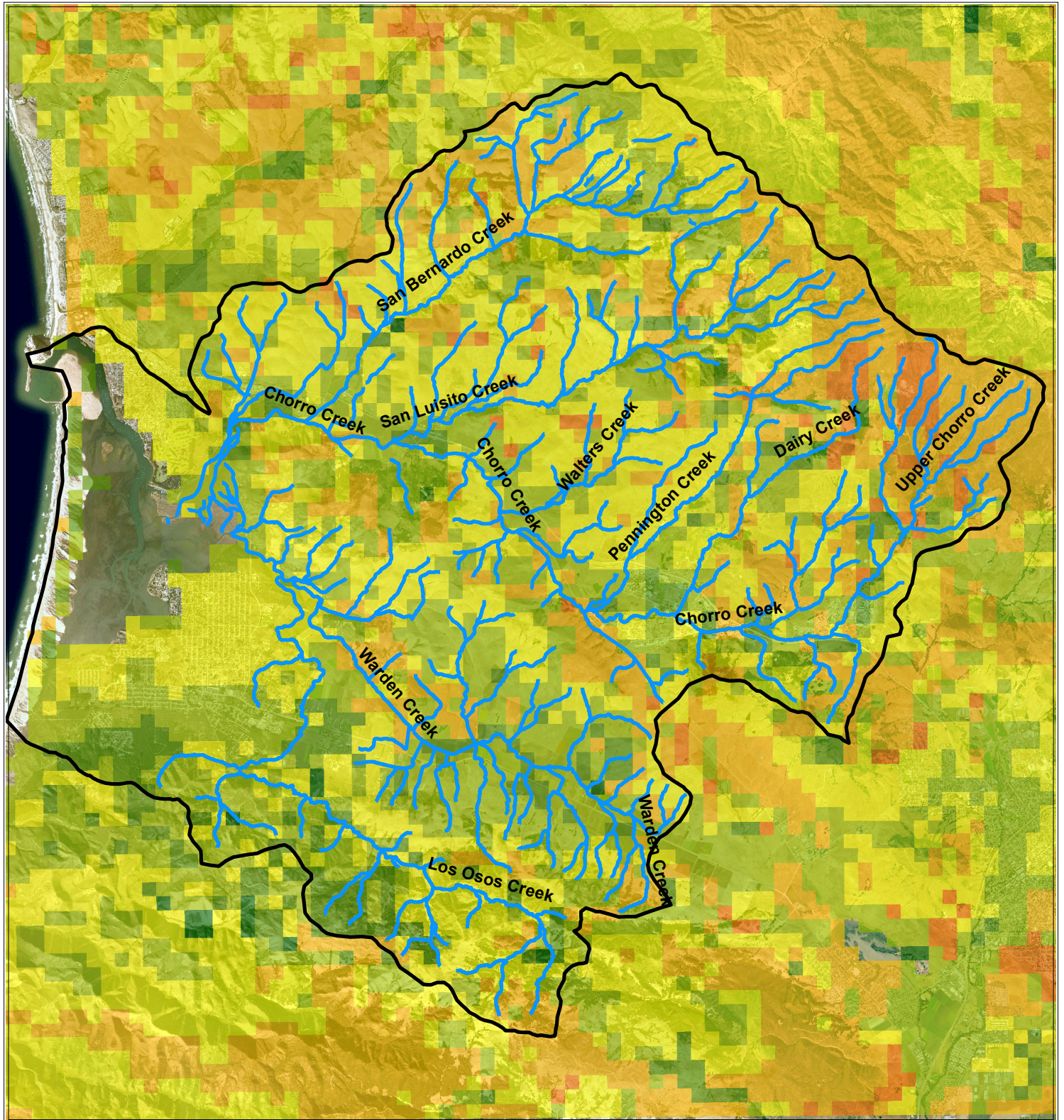
mm



PCM CWD projections were downloaded from the BCM and used the A2 scenario for carbon emissions produced by the IPCC. Map shows the projected CWD for Morro Bay for 2070-2099.



# Projected Climate Water Deficit for PCM B1 (2070-2099)



0 0.5 1 2 3 4 Miles



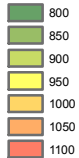
## Legend

Streams

Watershed boundary

### PCM B1 CWD (2070-2099)

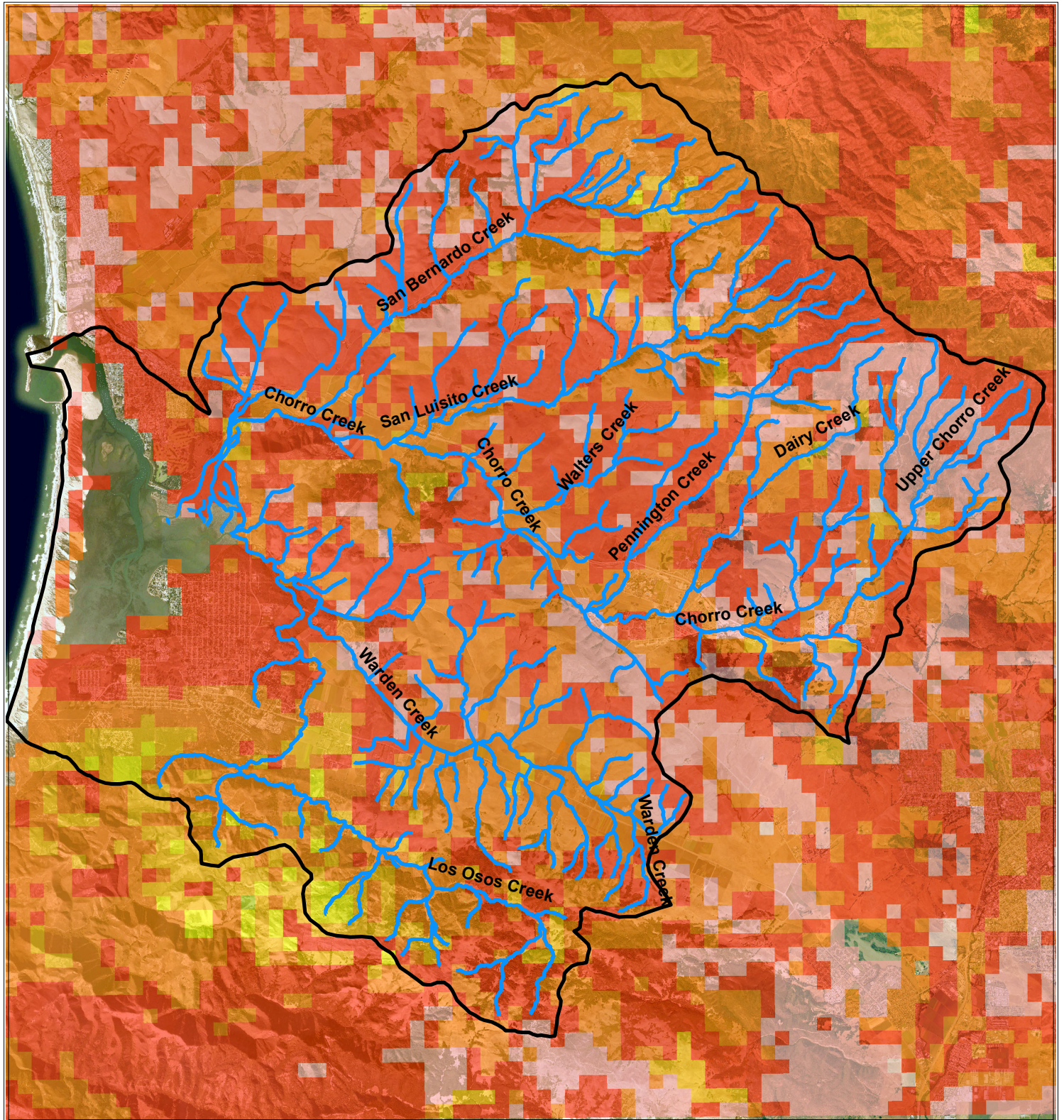
mm



PCM CWD projections were downloaded from the BCM and used the B1 scenario for carbon emissions produced by the IPCC. Map shows the projected CWD for Morro Bay for 2070-2099.



# Projected Climate Water Deficit for GFDL A2 (2070-2099)



0 0.5 1 2 3 4 Miles

N



## Legend

Streams

Watershed boundary

## GFDL A2 CWD (2070-2099)

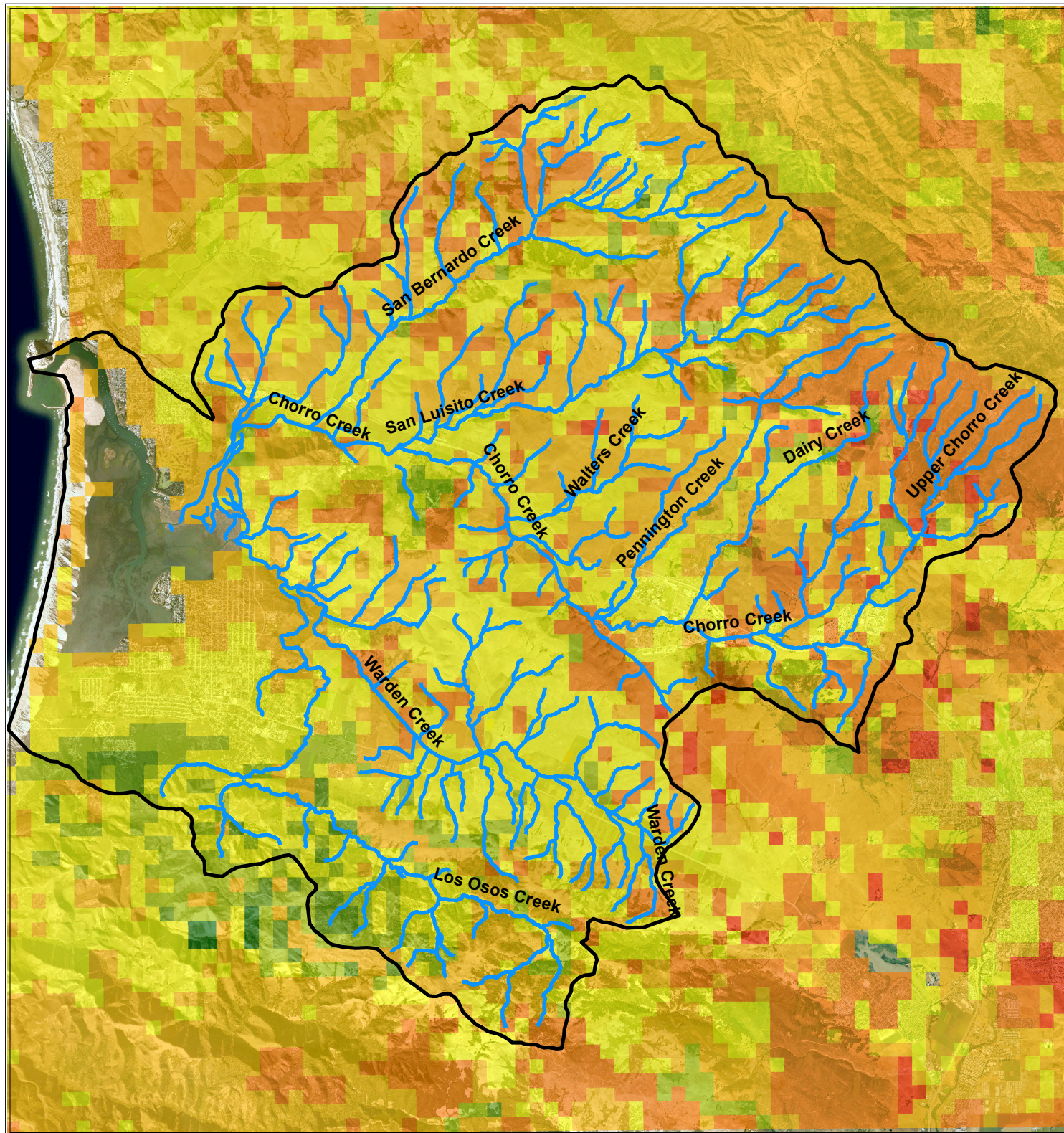
mm

900  
950  
1000  
1050  
1100  
1150  
>1150

GFDL CWD projections were downloaded from the BCM and used the A2 scenario for carbon emissions produced by the IPCC. Map shows the projected CWD for Morro Bay for 2070-2099.



# Projected Climate Water Deficit for GFDL B1 (2070-2099)



0 0.5 1 2 3 4 Miles



## Legend

Streams

Watershed boundary

### GFDL B1 CWD (2070-2099)

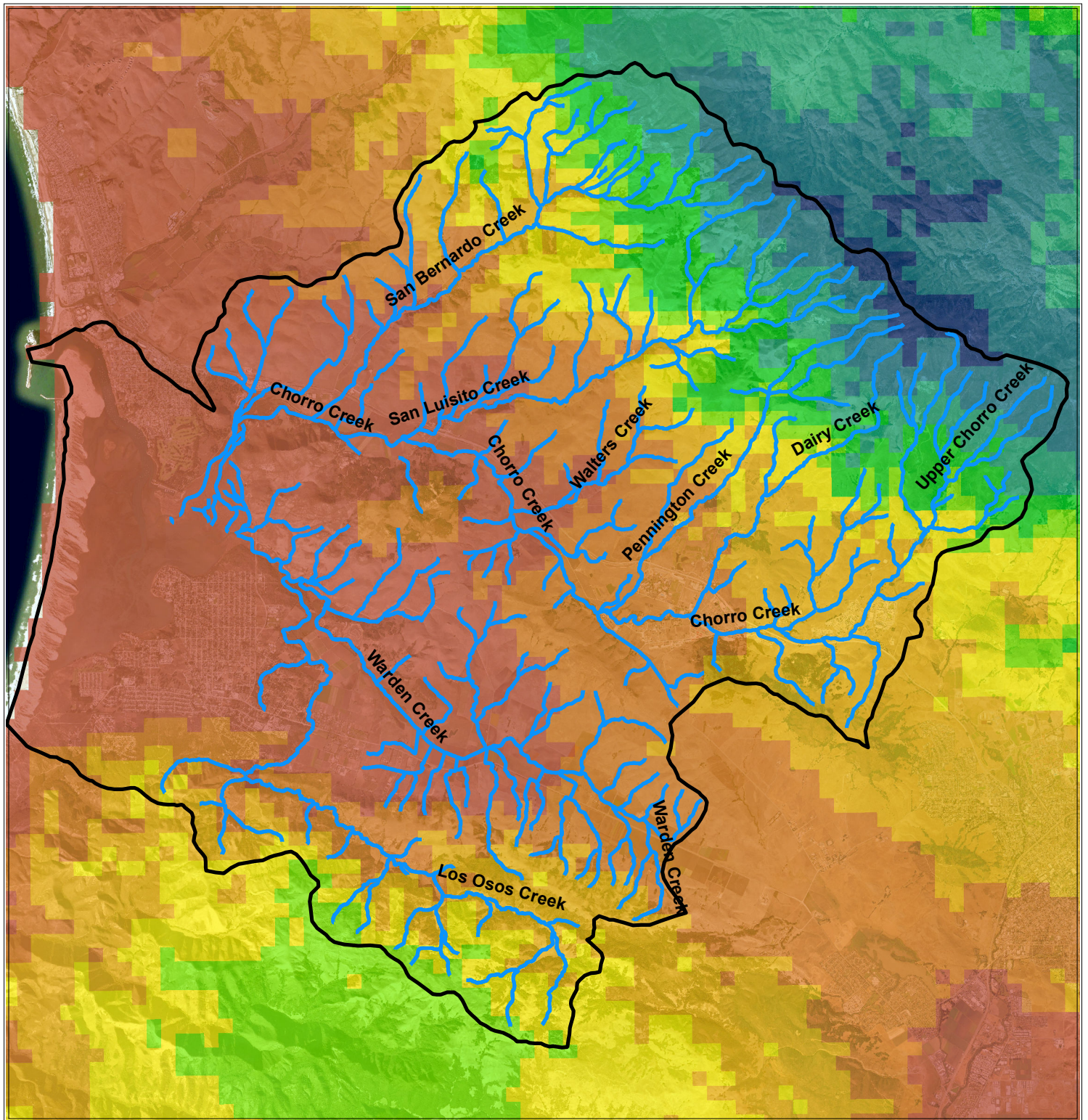
mm

800  
850  
900  
950  
1000  
1050  
1100

GFDL CWD projections were downloaded from the BCM and used the B1 scenario for carbon emissions produced by the IPCC. Map shows the projected CWD for Morro Bay for 2070-2099.



# Historic Average Annual Precipitation (1981-2010)



0 0.5 1 2 3 4 Miles



## Legend

- Streams
- Watershed boundary

## Historic Avg. Annual Precip. (1981-2010)

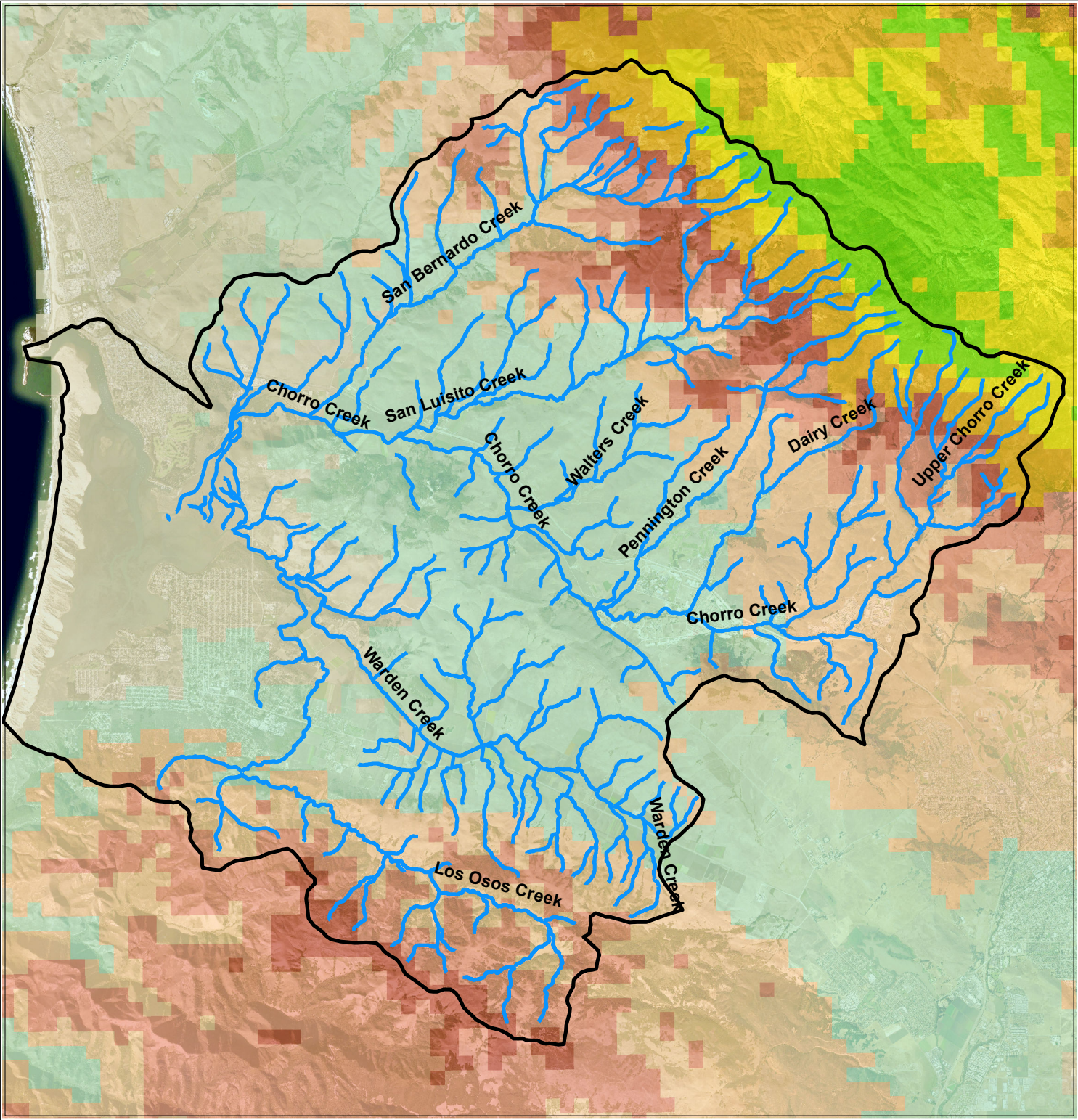
mm

- 500
- 550
- 600
- 650
- 700
- 800
- 900
- 1000
- 1050

Historic precipitation data was downloaded from the BCM.  
Map shows the average annual precipitation for Morro Bay from 1981 to 2010.



# Projected Average Annual Precipitation MIROC A2 (2070-2099)



**Legend**

Streams

Watershed boundary

MIROC A2 Avg. Annual Precip. (2070-2099)

mm

250

300

350

400

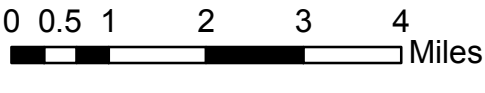
450

500

600

650

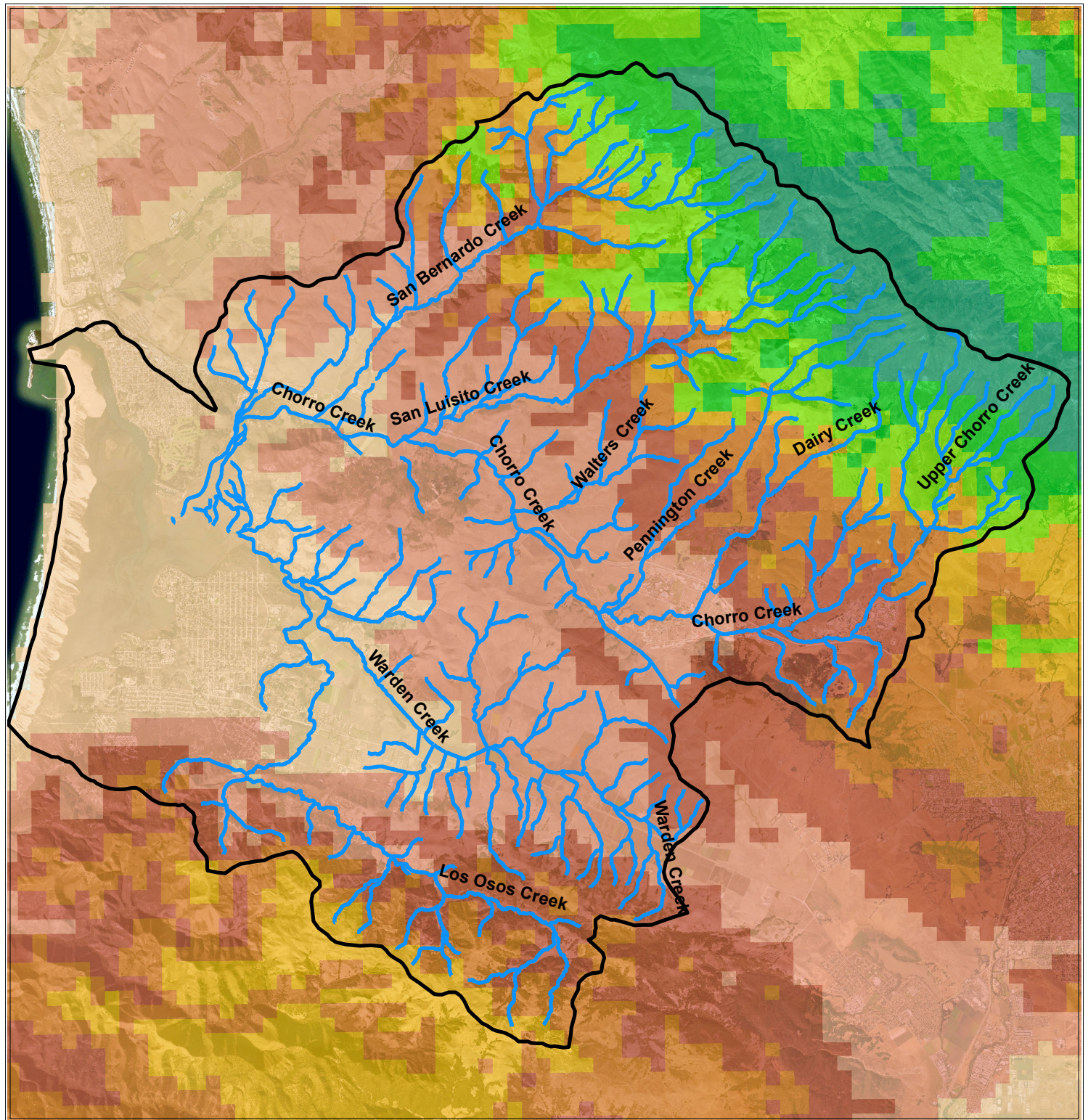
700



MIROC 3.2 precipitation projections were downloaded from the BCM and used the A2 scenario for carbon emissions produced by the IPCC. Map shows the projected average annual precipitation for Morro Bay for 2070-2099.



# Projected Average Annual Precipitation MIROC RCP 4.5 (2070-2099)



0 0.5 1 2 3 4 Miles



## Legend

Streams

Watershed boundary

MIROC RCP4.5 Avg. Annual Precip. (2070-2099)

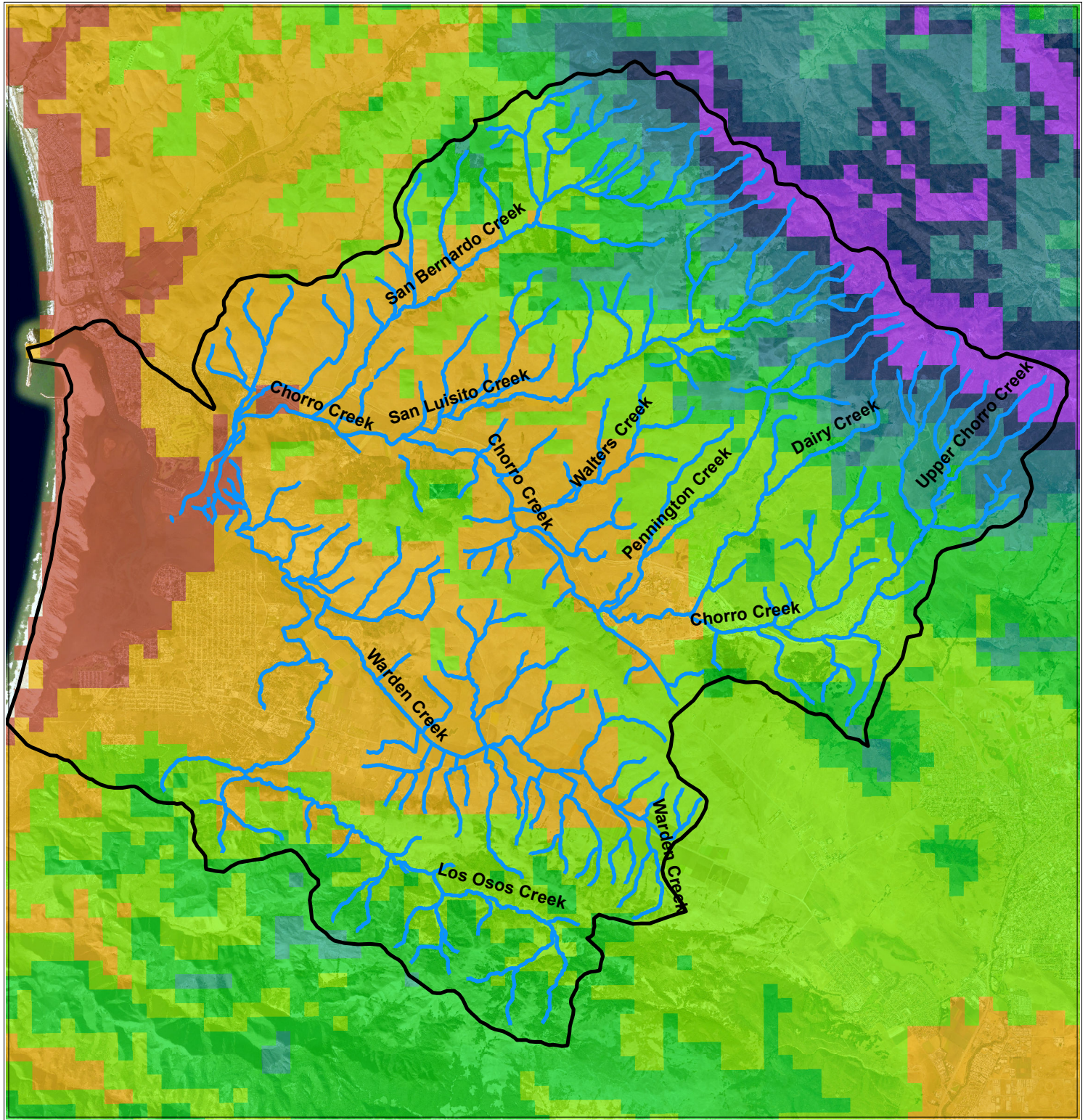
mm

400  
450  
500  
550  
600  
700  
800  
900

MIROC 3.2 precipitation projections were downloaded from the BCM and used the RCP 4.5 scenario for carbon emissions produced by the IPCC. Map shows the projected average annual precipitation for Morro Bay for 2070-2099.



# Projected Average Annual Precipitation PCM A2 (2070-2099)



0 0.5 1 2 3 4 Miles



## Legend

Streams

Watershed boundary

PCM A2 Avg. Annual. Precip. (2070-2099)

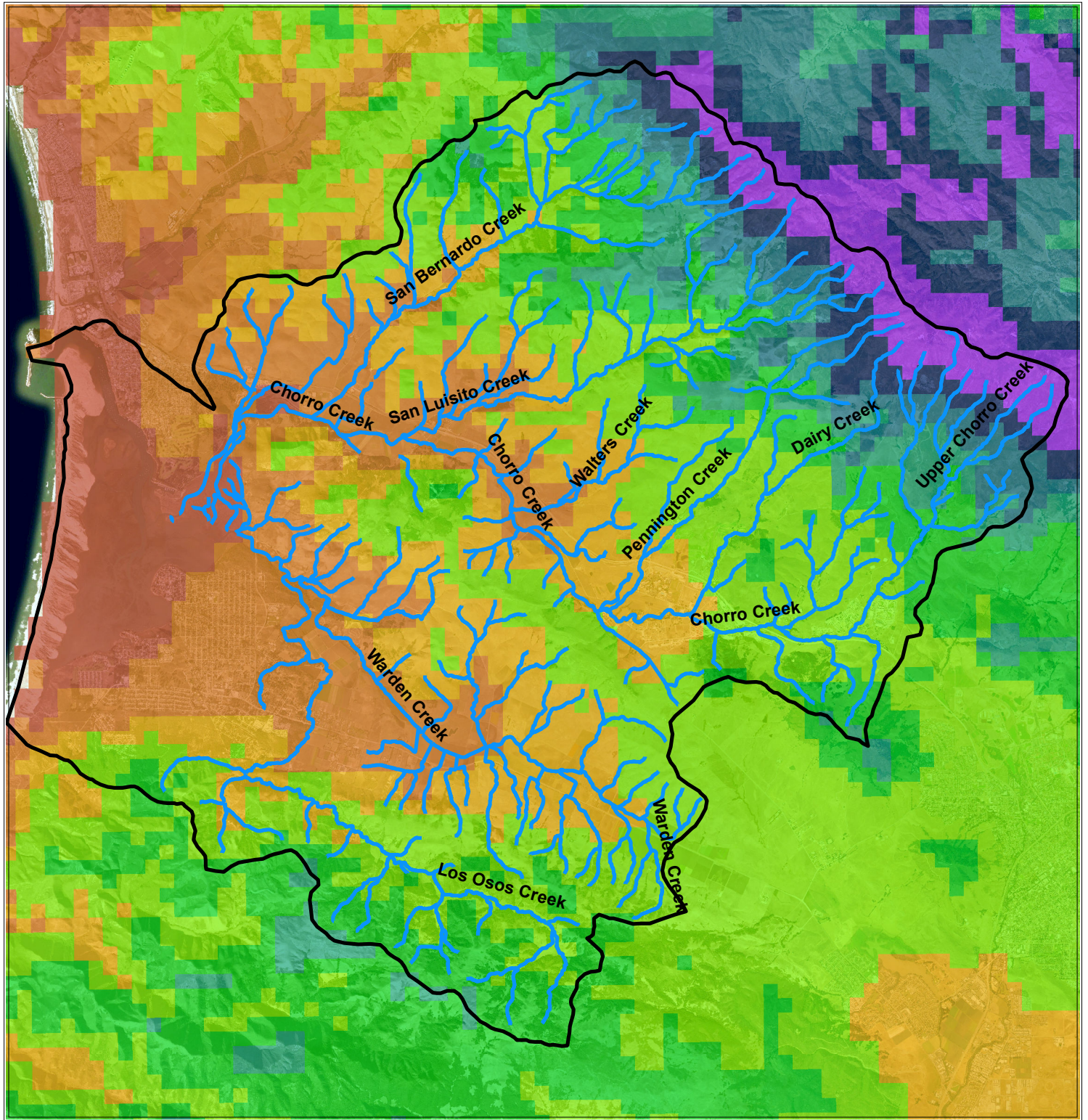
mm

500  
600  
700  
800  
900  
1000  
1100  
1200

PCM precipitation projections were downloaded from the BCM and used the A2 scenario for carbon emissions produced by the IPCC. Map shows the projected average annual precipitation for Morro Bay for 2070-2099.



# Projected Average Annual Precipitation PCM B1 (2070-2099)



0 0.5 1 2 3 4 Miles



## Legend

Streams

Watershed boundary

PCM B1 Avg. Annual Precip. (2070-2099)

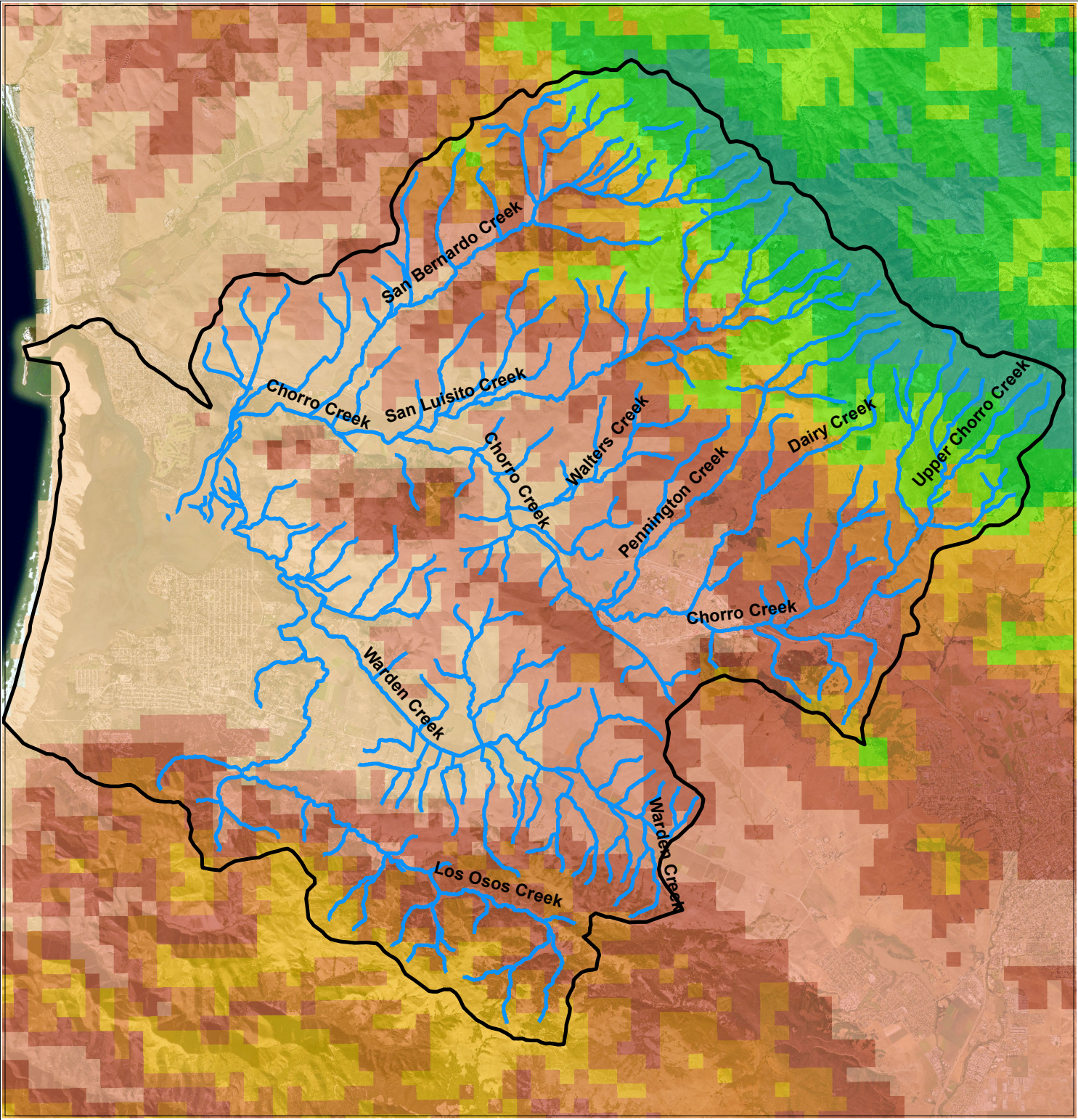
mm

450  
500  
550  
600  
700  
800  
900  
1000  
1100  
1200

PCM precipitation projections were downloaded from the BCM and used the B1 scenario for carbon emissions produced by the IPCC. Map shows the projected average annual precipitation for Morro Bay for 2070-2099.



# Projected Average Annual Precipitation GFDL A2 (2070-2099)

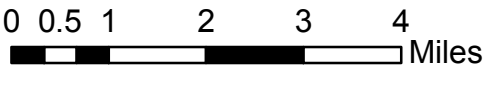


**Legend**

- Streams
- Watershed boundary

**GFDL A2 Avg. Annual Precip. (2070-2099)**  
mm

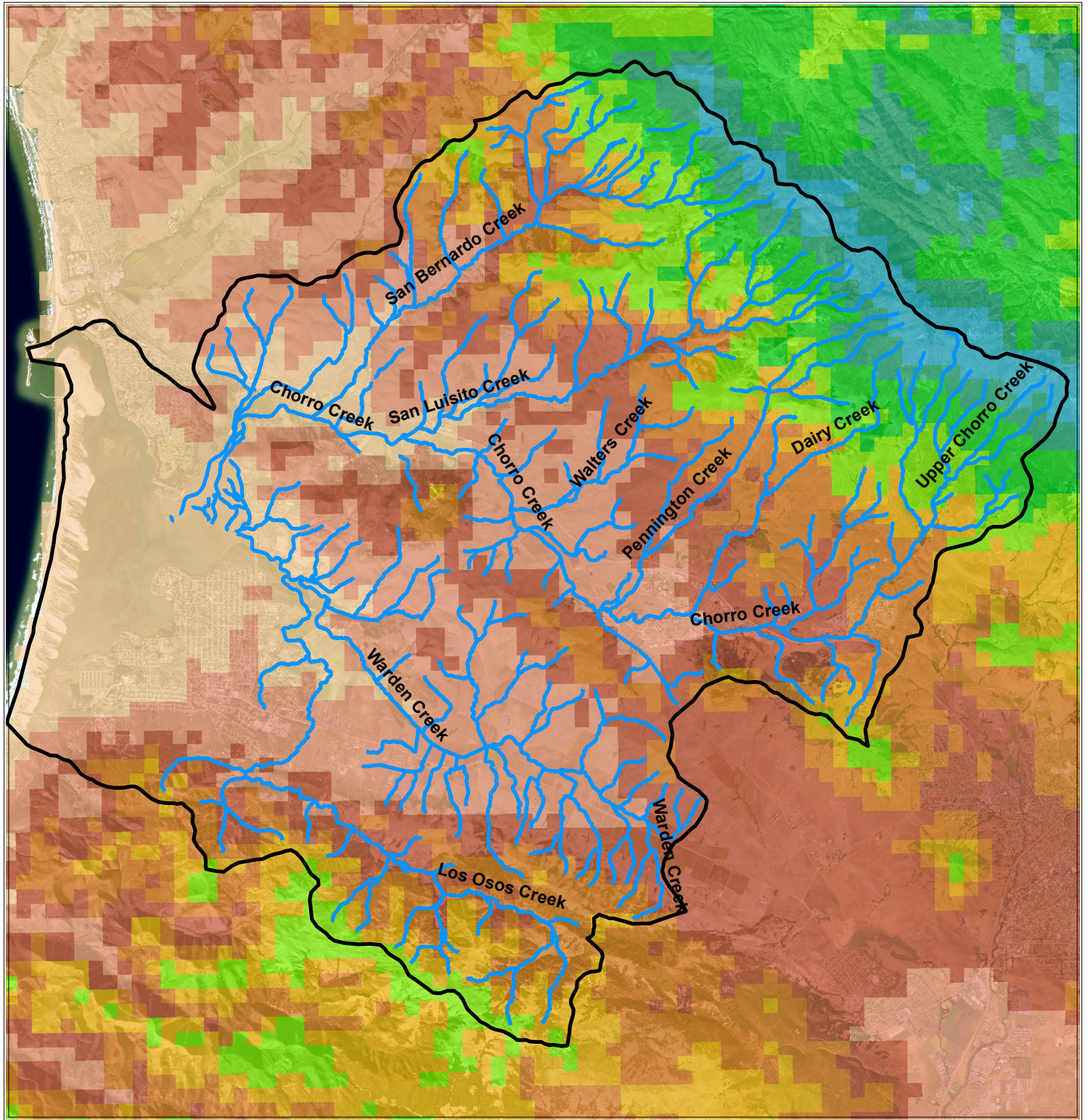
350
400
450
500
550
600
700
800
900



GFDL precipitation projections were downloaded from the BCM and used the A2 scenario for carbon emissions produced by the IPCC. Map shows the projected average annual precipitation for Morro Bay for 2070-2099.



# Projected Average Annual Precipitation GFDL B1 (2070-2099)



0 0.5 1 2 3 4 Miles



## Legend

- Streams
- Watershed boundary

GFDL B1 Avg. Annual Precip. (2070-2099)

- mm
- 400
  - 450
  - 500
  - 550
  - 600
  - 700
  - 800
  - 900
  - >900

GFDL precipitation projections were downloaded from the BCM and used the B1 scenario for carbon emissions produced by the IPCC. Map shows the projected average annual precipitation for Morro Bay for 2070-2099.