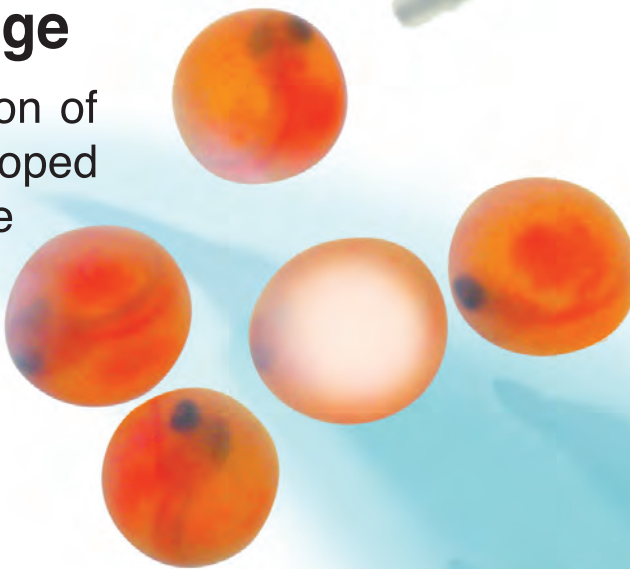




Life Stages of the Rainbow Trout

The embryonic (egg) stage

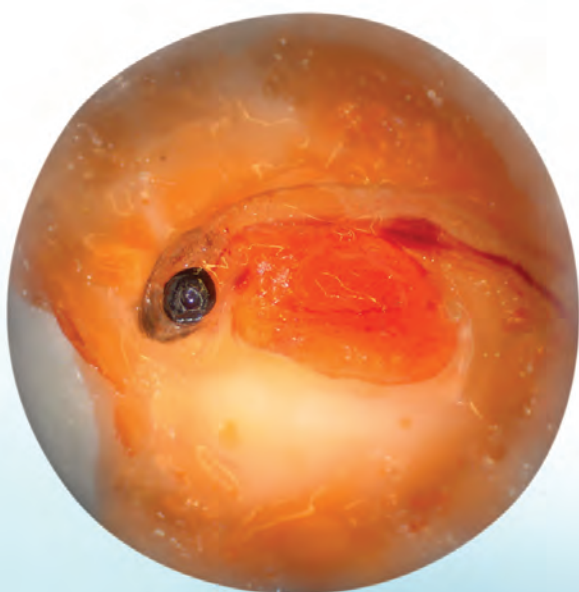
Within 10 to 14 days of fertilization of the egg, the embryo has developed sufficiently for the eyes to be seen. This is the "eyed egg". Eggs that have turned white are not fertile and will not hatch.



Actual size of egg



Actual size of alevin



Enlarged photo of a immature alevin inside the egg

Hatching Stage

The time of hatching depends on the water temperature. When they are ready, an enzyme is secreted which softens the eggshell and allows the sac-fry (alevin) to break through.



Larval Stage

When hatched the alevin retains its yolk sac and remains hidden in the gravel as protection from predators.



Juvenile Stage

In 10 to 20 days the alevin has absorbed the yolk sac and emerged from the gravel as fry. They now begin to feed on plankton and free floating organic matter. The fry gradually acquire the characteristic body markings of Rainbow Trout



www.fishinginthecity.org

Artwork by Ed Huff of Mission Peak Fly Anglers